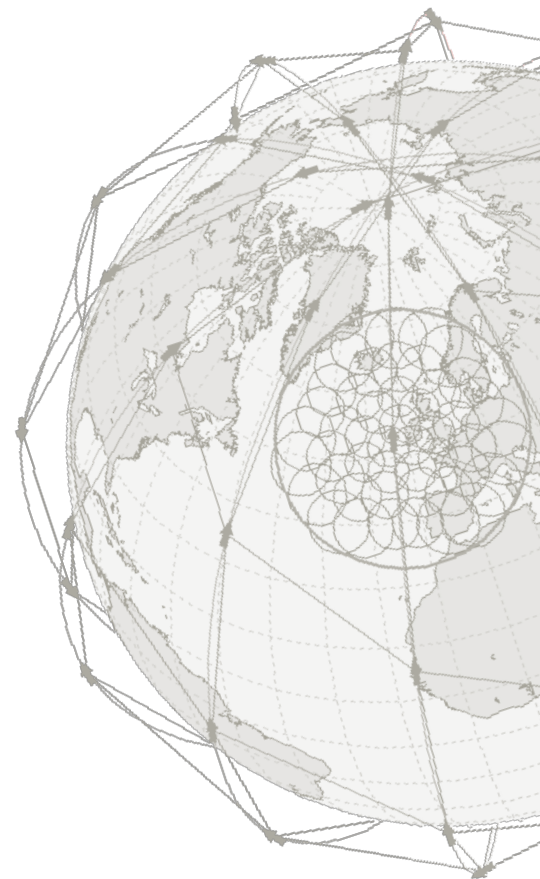




Woods Hole Group Iridium Services Pricelist 2021

Woods Hole Group, Inc. is a subsidiary of CLS France.



The prices indicated in this catalog are standard and per unit; discounted rates may be applicable (i.e. for large quantities of platforms) please contact us



Iridium Short Burst Data (SBD)

Iridium Short Burst Data (SBD) Service is an efficient network protocol designed for smaller data messages. SBD uses a proprietary network protocol to transfer data messages to and from the remote terminal. It is possible to send Mobile Originated (MO-SBD) and Mobile Terminated (MT-SBD) messages.

- ✓ Maximum MO (mobile-originated) message size is 1960 Bytes
- ✓ Maximum MT (mobile-terminated) message size is 1890 Bytes
- ✓ Data are received by email or FTP/SFTP in attached file - 5 recipients maximum
- ✓ Service is billed according to volume of data exchanged

Global network transmit latency for delivery of messages ranges from approximately 5 seconds for short messages to approximately 20 seconds for maximum length messages. This latency is the elapsed time before the Iridium SBD system sends the SBD message to its email destination. Additional latency could be introduced by the Internet or the customer's host system.

SBD BASIC SERVICES

▪ Activation / Reactivation fee	\$35.00
▪ Deactivation fee	\$0.00
▪ Monthly fee per platform:	\$13.00
▪ Fee per Kbyte The minimum billable message size is 10 bytes	\$1.00
▪ Monthly fee, if no transmission (MO & MT) in a calendar month	\$13.00
▪ Mailbox check* and SBD registration**, per event	\$0.02

* A mailbox check event is a message issued by any Iridium SBD modem to the satellites to check for any pending remote message to download

** A SBD registration event is a message sent by any Iridium SBD modem to register the transmitter on the system after a long inactive period



Contact: iridiumservices@woodsholegroup.com

Woods Hole Group, 4300 Forbes Blvd Suite #110 Lanham, MD 20706 Tel. +1 (301) 925-4411



Iridium Short Burst Data (SBD) – Value-added services

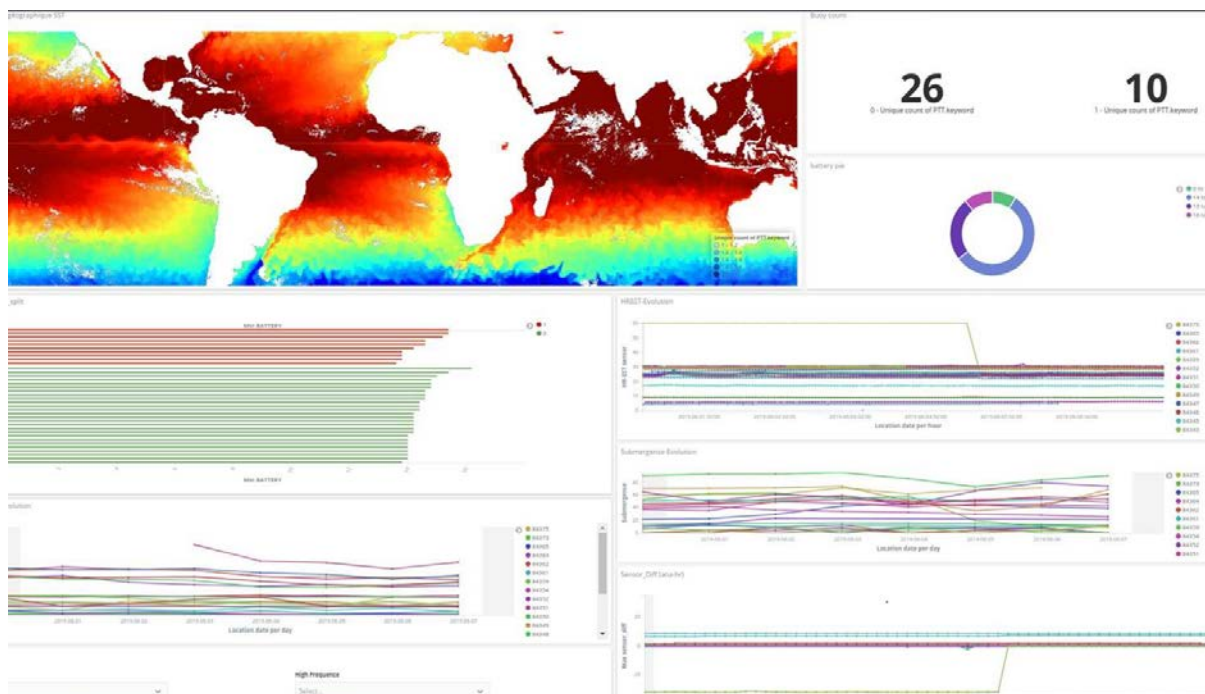
SBD DATA PROCESSING & VALUE-ADDED SERVICES

- Monthly subscription fee for Woods Hole Group SBD value-added services, per platform **\$20.00**
 - ✓ SBD data decoding, GTS processing, GPS decoding & positions display, data distribution, archiving
 - ✓ 24h access to web-portal and web-mapping tool, monitoring & customized alerts system

NEW - SEECHART, UNIQUE DASHBOARD FOR MONITORING OCEANOGRAPHIC EQUIPMENT

- Set-up fee, per platform *** **\$20.00**
Monitor the vital parameters (i.e. battery status, etc) and visualize the position, metadata, sensor data of an unlimited number of oceanographic platforms (using both Iridium and Argo telemetry systems), View & download in-situ tracks with satellite ocean data, Perform immediate comparison with satellite data

*** Only available to platforms using WHG's SBD value-added service



Contact: iridiumservices@woodsholegroup.com

Woods Hole Group, 4300 Forbes Blvd Suite #110 Lanham, MD 20706 Tel. +1 (301) 925-4411



Iridium RUDICS

The Iridium Router-based Unrestricted Digital Interworking Connectivity Solution (RUDICS) is an enhanced gateway termination/origination capability for circuit-switched data calls across the Iridium satellite network (two-way dial-up communication). RUDICS is a data service designed to incorporate an integrated data solution such as remote asset monitoring, control and data file transfer. RUDICS is typically best suited for applications that deploy a large number of units which report to a central host application. Some Iridium RUDICS applications switch automatically on CSD protocol when the RUDICS service is not accessible.

RUDICS SIM CARD

▪ SIM card	\$15.00
▪ SIM card activation	\$0.00
▪ SIM card deactivation	\$0.00
▪ SIM card reactivation	\$250.00

RUDICS ACCOUNT

▪ RUDICS account setup fee*	\$2500.00
▪ RUDICS account modification fee**	\$750.00

RUDICS SERVICE

▪ Monthly subscription fee, per active SIM card	\$20.00
▪ RUDICS data calls (20 second increments), fee per min.	\$0.65
▪ CSD data calls* (20 second increments), fee per min.	\$0.95

*In order to use the RUDICS service with a Woods Hole Group SIM card, the user must have a RUDICS account created through Woods Hole Group. To open a RUDICS account, the user must provide a static, public IP address and a port number for the server that will be used for RUDICS communications (the server may be physical or virtual). Mobile Terminated calls (MT) capability, i.e. calls from the server to a remote application, is not enabled by default on RUDICS accounts. If this feature is required, it must be specified by the user at the time of requesting the initial account setup. This feature will be provided at no extra charge and Iridium will open 5 specific ports for MT calls. Extra fees apply if more than 5 ports are required (please contact Woods Hole Group).

** *RUDICS account modification* means a formal request, subsequently to the initial account setup, to change the IP address and/or the port number of the user's server, and/or to add MT call capability on the account. If, for a specific account, several modifications are requested together (e.g. change of IP address plus addition of MT capability), a single fee will be charged. If not, each modification request will be charged separately at the current rate.



Contact: iridiumservices@woodsholegroup.com

Woods Hole Group, 4300 Forbes Blvd Suite #110 Lanham, MD 20706 Tel. +1 (301) 925-4411



Iridium CSD

The Circuit Switched Data (CSD) Service supports the transfer of relatively large volumes of data (tens of kilobytes) using the Iridium dial-up capability. The Iridium Data Module (IDM) places a call to the Public Switched Telephone Network (PSTN) or to another IDM then exchanges the data through that open circuit at approximately 2400 bits per second. CSD is best suited for the transmission of large data sets and for applications with a small number of deployed platforms.

CSD SIM CARD

▪ SIM card	\$15.00
▪ SIM card activation	\$ 0.00
▪ SIM card deactivation	\$ 0.00
▪ SIM card reactivation	\$ 250.00

CSD SERVICE

▪ Monthly subscription fee, per active SIM card	\$20.00
▪ CSD data calls* (20 second increments), fee per min.	\$0.95

* CSD calls included are ISU to ISU, ISU to PSTN and ISU to Direct Internet. In the case of CSD calls to other satellite systems (except Iridium), different rates apply (please contact Woods Hole Group).



Contact: iridiumservices@woodsholegroup.com

Woods Hole Group, 4300 Forbes Blvd Suite #110 Lanham, MD 20706 Tel. +1 (301) 925-4411



Iridium RUDICS Service for Profiling Floats

Woods Hole Group / CLS offers a hosting service for profiling floats that uses Iridium RUDICS: a dedicated CLS account that allows all users to easily and securely manage their communication with their floats. Downloading data files and uploading mission files is easily carried out via FTP or SFTP.

CLS hosting is based on CLS servers that are operational and monitored 24/7, with an active redundancy/backup across two separate processing centers to ensure a maximum efficiency and data safety.

- ✓ 100% compatible with all float types, incl. BGC floats
- ✓ No need to maintain a connected server 24/7 or to develop a communication interface to manage data communication
- ✓ Auto-backup of all data files (up to one month after the end of contract)
- ✓ Quick activation of the service (vs. up to two weeks to register a RUDICS account)
- ✓ CSD / PSTN line for backup data calls
- ✓ Easy data management through FTP / SFTP accounts

This solution was developed thanks to CLS' strong experience with Iridium RUDICS communication and satellite systems and thanks to our long-lasting collaboration with the ARGO scientific community & float manufacturers.

SIM CARD FOR HOSTED FLOATS

▪ SIM card	\$15.00
▪ Activation of SIM card and hosting service	\$150.00
▪ SIM card deactivation	\$0.00
▪ SIM card reactivation	\$250.00

HOSTING SERVICE

▪ Monthly fee, per float (includes 20 minutes of RUDICS data communication)	\$60.00
▪ Monthly fee, per float, when there is no data transmission in a calendar month	\$20.00
▪ Out-of-allowance RUDICS data calls (20 second increments), fee per min.	\$0.65
▪ CSD data calls (20 second increments), fee per min.	\$0.95



Contact: iridiumservices@woodsholegroup.com

Woods Hole Group, 4300 Forbes Blvd Suite #110 Lanham, MD 20706 Tel. +1 (301) 925-4411



Iridium PILOT

Iridium Pilot is a global broadband maritime communication solution. It provides broadband Internet data up to 134 Kbps, and high-quality voice (up to 3 simultaneous phone calls) in one low-cost platform. As a packet switched service, the Iridium PILOT Service substantially reduces communication costs compared to circuit switched services. It also offers a wide range of customizable data plans allowing you to suit your needs and your budget.

PILOT SIM CARD

▪ PILOT SIM card*	\$12.00
▪ SIM card activation, if Pilot terminal purchased from Woods Hole Group	\$0.00
▪ SIM card activation, if Pilot terminal not purchased from Woods Hole Group	\$275.00
▪ SIM card deactivation	\$0.00
▪ SIM card reactivation	\$275.00

PILOT 128 Kbps DATA SERVICES

DATA PLAN (MB included)	0	10	25	75	200	1000	5000
Monthly subscription	\$65.00	\$149.00	\$254.00	\$487.00	\$768.00	\$1438.00	\$2879.00
Out of allowance fee, per MB	\$18.70	\$15.60	\$11.00	\$7.20	\$4.20	\$0.70	\$0.54

OPTION : Monthly subscription for static public IP address \$36.00

PILOT VOICE SERVICES**

▪ PILOT voice call to landline & mobile phones (20 second increments), fee per min.	\$1.00
▪ PILOT voice call to an Iridium phone (20 second increments), fee per min.	\$0.72
▪ PILOT voice call to another satellite system (20 second increments), fee per min.	\$10.68

* PILOT SIM cards are different from RUDICS / CSD / VOICE & SMS SIM cards – please make sure to mention that you need a PILOT SIM card when ordering it.

** The PILOT voice service cannot be used on its own: the user must subscribe to a PILOT data plan in order to use the voice service.



Contact: iridiumservices@woodsholegroup.com

Woods Hole Group, 4300 Forbes Blvd Suite #110 Lanham, MD 20706 Tel. +1 (301) 925-4411



Iridium VOICE & SMS

Woods Hole Group Iridium Voice & SMS services are designed to meet the needs of customers using Iridium satellite phones. With a unique pay-as-you-go price plan, Woods Hole Group offers the convenience of Iridium's reliable everywhere voice and data communication, without the need to be concerned about a prepaid account expiring or having a low balance.

- ✓ Bi-directional continuous communication
- ✓ SMS & Voice
- ✓ Global: pole-to-pole coverage on the Iridium satellite network

VOICE & SMS SIM CARD

▪ SIM card	\$15.00
▪ SIM card activation	\$0.00
▪ SIM card deactivation	\$ 0.00
▪ SIM card reactivation	\$275.00

VOICE & SMS SERVICES

▪ Monthly subscription fee, per active SIM card	\$54.00
▪ Iridium Voice call to landline & mobile phones (20 second increments), fee per min.	\$1.50
▪ Iridium Voice call to Iridium phones & Iridium personal mailbox (20 second increments), fee per min.	\$0.72
▪ Iridium Voice call to another satellite system (20 second increments), fee per min.	\$10.68
▪ SMS, per message	\$0.48

DATA SERVICES

▪ CSD & RUDICS data calls through Iridium phone, fee per min.	\$1.25
---	--------



Contact: iridiumservices@woodsholegroup.com

Woods Hole Group, 4300 Forbes Blvd Suite #110 Lanham, MD 20706 Tel. +1 (301) 925-4411